



Star City

Blackjack



blackjack

Blackjack is one of the most popular casino games. The object of the game is to draw cards with a total closer to 21 than the dealer's total – without going over 21. Cards are dealt clockwise from a dealing device called a shoe or from a shuffling machine. You are dealt two cards, while the dealer takes one card. The cards are dealt face-up so you can see your point value. Blackjack is played with 3, 4, 6 or 8 decks of cards.

how to play

Picture cards (Jack, Queen and King) count as 10, Aces count as 1 or 11, whichever is to your advantage eg. Ace, 8, 10 = 19. Any other cards (2, 3, 4, 5, 6, 7, 8, 9, 10) count as face value.

If your first two cards are an Ace and any ten-point card, you have Blackjack. The dealer will announce "Blackjack" and pay you at odds of 3 to 2. In the event that the dealer also makes Blackjack, the hand will be a stand-off (a tie or draw) and you will neither win nor lose. However, if the dealer makes any other total including 21 with three or more cards, your Blackjack will win.

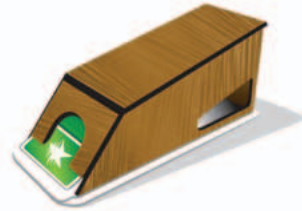
If you do not have Blackjack on your first two cards, you may decide to stand (draw no more cards) or hit (draw more cards) until you decide to stand, or until your point total goes over 21 in which case you lose. You must hit if the point total of your cards is 11 or less. Irrespective of your point totals, the dealer must hit with 16 or less and stand with 17 or more. If the dealer goes over 21, all hands remaining on the table must be paid.

If you finish with a total closer to 21 than the dealer's total, you win and will be paid even money. If you and the dealer have the same totals, you have a stand-off. In the event that the dealer has Blackjack, you lose unless you also have Blackjack, in which case you have a stand-off.

In the game of Blackjack you can place a bet on a box (playing area) or behind another player's bet. Up to three players may bet on one box, provided that the total of all bets remains within the maximum limits displayed on the table sign.

important

- You may not handle, remove or alter any cards used in the game of Blackjack.
- Although the dealer will call out the card totals, it is your responsibility to also check your point totals are correct.



doubling

You may double your original bet if your first two cards total 9, 10 or 11 but not if either of your first two cards is an Ace.

If you elect to double, you place an additional bet equal to your original bet. You will then receive one additional card on that hand.

splitting pairs

If your first two cards have the same point value, you may ask the dealer to split your hand, to form two separate hands, by betting an amount equal to the original bet.

Each hand will be played and completed in turn. At least one card will be dealt to each hand. If the first two cards dealt to a split hand total 9, 10 or 11 you may double providing the hand does not contain an Ace.

If you split Aces, only one card is dealt to each Ace. If a ten-point card is dealt to either Ace, the hand is treated as a 21, not Blackjack.



See tables games staff for further information on how to play.

insurance

Whenever the first card dealt to the dealer is an Ace, the dealer will announce “Insurance” and you may make an insurance bet in case the dealer makes Blackjack.



An insurance bet may be made by placing an amount not more than half of your original bet, on the Insurance line of the table layout. All insurance bets must be placed prior to any players receiving a third card.

An insurance bet will only win if the dealer makes Blackjack and is paid at odds of 2 to 1.

blackjack

In the event that the dealer receives Blackjack and you have placed additional bets on split hands and/or a double, the dealer will only take an amount equal to your original bet from the remaining bets in each box.

In the event that you have Blackjack and the dealer does not have an Ace or ten-point card as the first face-up card, the dealer will pay your Blackjack bet at odds of 3 to 2 and remove your cards prior to any players receiving a third card. If the dealer’s face-up card is an Ace or ten-point card, the game will be dealt in the usual fashion, with all bets paid or taken after the dealer’s hand has been completed.

perfect pairs

Perfect Pairs™ is an optional side bet offered on certain Blackjack tables. The concept of the bet is simple. A Perfect Pairs™ bet wins if the first two cards dealt to a Blackjack hand are a pair and loses if they are not a pair. A Perfect Pairs™ bet is made prior to the initial deal. There are three different types of pairs and the payout odds vary accordingly.

how to play

To play Perfect Pairs™ simply place a bet in the Perfect Pairs™ area in front of the Blackjack box – You are not required to make an initial wager on the Blackjack hand, but there must be at least one regular Blackjack bet placed on the Blackjack box before a Perfect Pairs™ wager can be made and the cards drawn to that hand. A maximum of three Perfect Pairs™ wagers will be permitted per Blackjack box and preference will be given to players who have also placed a wager on the Blackjack hand for that box. Please note that the casino may limit the placement of Perfect Pairs™ wagers to those players who also have a Blackjack wager and will display a sign at the table when this applies.

All bets must be placed before any cards are dealt and you can only place one Perfect Pairs™ bet for each Blackjack hand in the round of play. If the first two cards dealt to the Blackjack hand are a pair, you win! For the purposes of playing Perfect Pairs™ a pair is a hand where the first two cards dealt, in the initial deal only, are either:

Mixed Pair (A)	Two cards of the same number or picture type but of different colours eg. Queen of Hearts and Queen of Spades	Pays 5 to 1
Coloured Pair (B)	Two cards of the same number or picture type and colour but of different suits eg. Queen of Hearts and Queen of Diamonds	Pays 10 to 1
Perfect Pair (C)	Two cards of the same number or picture type and suit eg. Queen of Hearts and Queen of Hearts	Pays 30 to 1



Mixed Pair (A)



Coloured Pair (B)



Perfect Pair (C)



See tables games staff for further information on how to play.



80 Pyrmont Street Pyrmont NSW 2009, Australia
PO Box Q192, QVB NSW 1230, Australia
www.starcity.com.au

Star City Pty Ltd ABN 25 060 510 410

Is gambling a problem for you? G-line (NSW) is a
counselling service CALL 1800 633 635